

North Hempstead Beach Park Master Plan

North Hempstead Beach Park Master Plan Presentation

January 2019



Quennell Rothschild & Partners
Landscape Architects | Urban Designers | Planners



Features:

- The continuous waterfront esplanade provides a shared bikeway, walkway, and seating
- Shoreline trail extends to northeast point, with dog beach, picnic and volleyball areas
- Main bathhouse features new outdoor cafe seating, games and enhanced nautical playground
- Central performance green provides passive flexible lawn space and seasonal ice skating
- Sensory garden, games & hammock zone and adult fitness link the pavilions to the performance green
- Sledding hill provides sloped seating for performances and winter activity
- Playground areas are the nexus between performance lawn, picnic area, and esplanade
- Waterfront plaza features streamlike water jets, seating, planting and covered swings
- Soccer is added; baseball is expanded
- Tennis, basketball, skate and BMX bike park enliven northern esplanade area
- Waterfront restaurant with outdoor terraces and firepit anchors north end
- Kayak storage and ramp make use of northern cove
- Maintenance is relocated to the north end





LANDSCAPED ENTRANCE



BIOSWALES IN PARKING



SHORELINE TRAIL



DOG BEACH



CORN HOLE



NAUTICAL DECK



OUTDOOR DINING PATIO



ADULT FITNESS



HAMMOCK GROVE



SENSORY GARDEN



PERFORMANCE GREEN

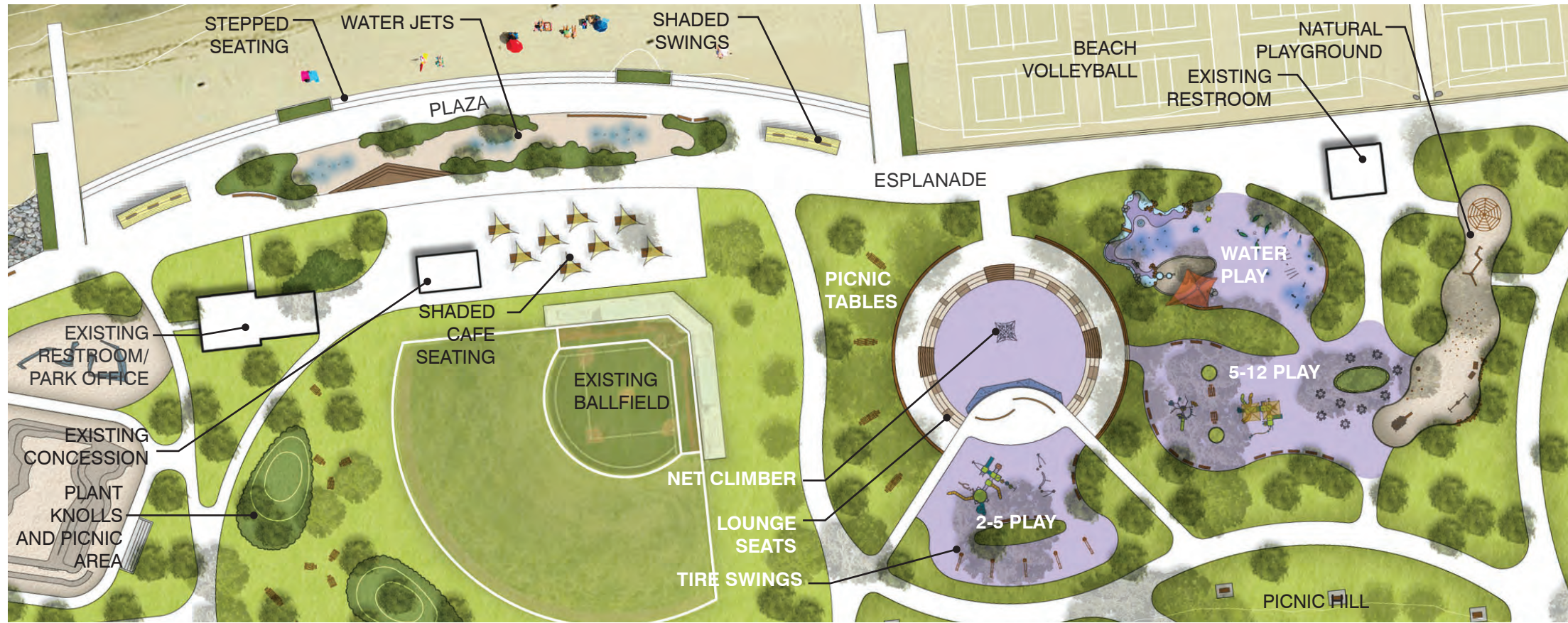


SLEDDING HILL



SEASONAL ICE SKATING RINK





SHADED SWINGS



PLAZA WATER JETS



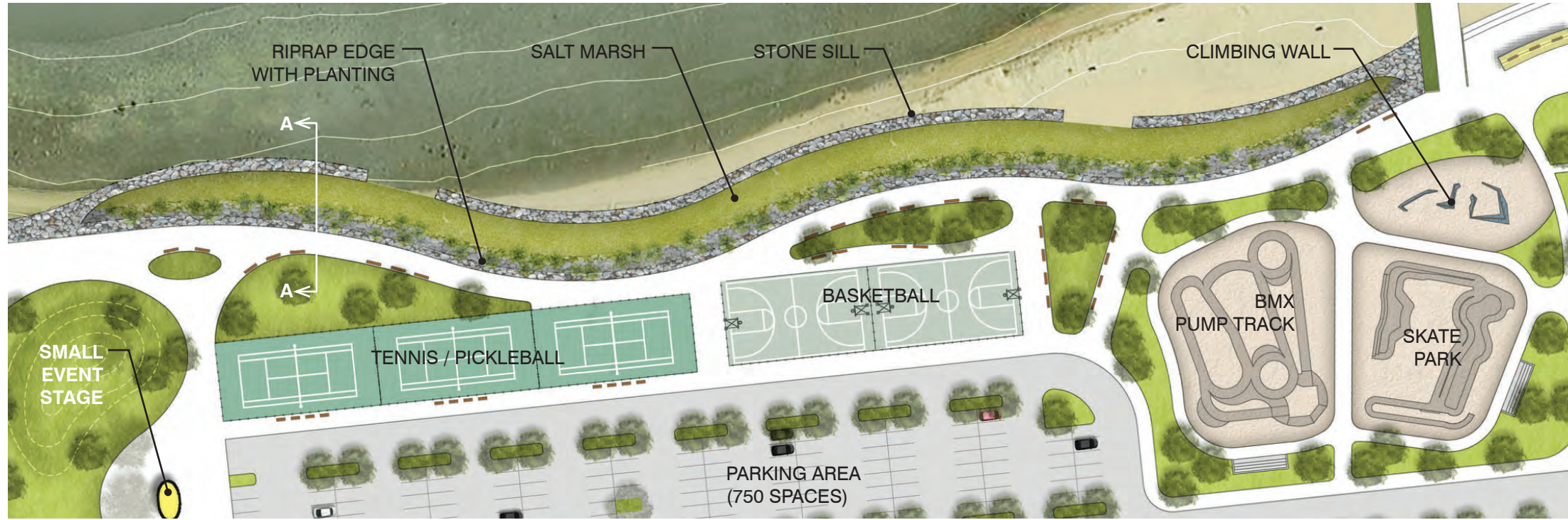
STEPPED SEATING



WATERPLAY



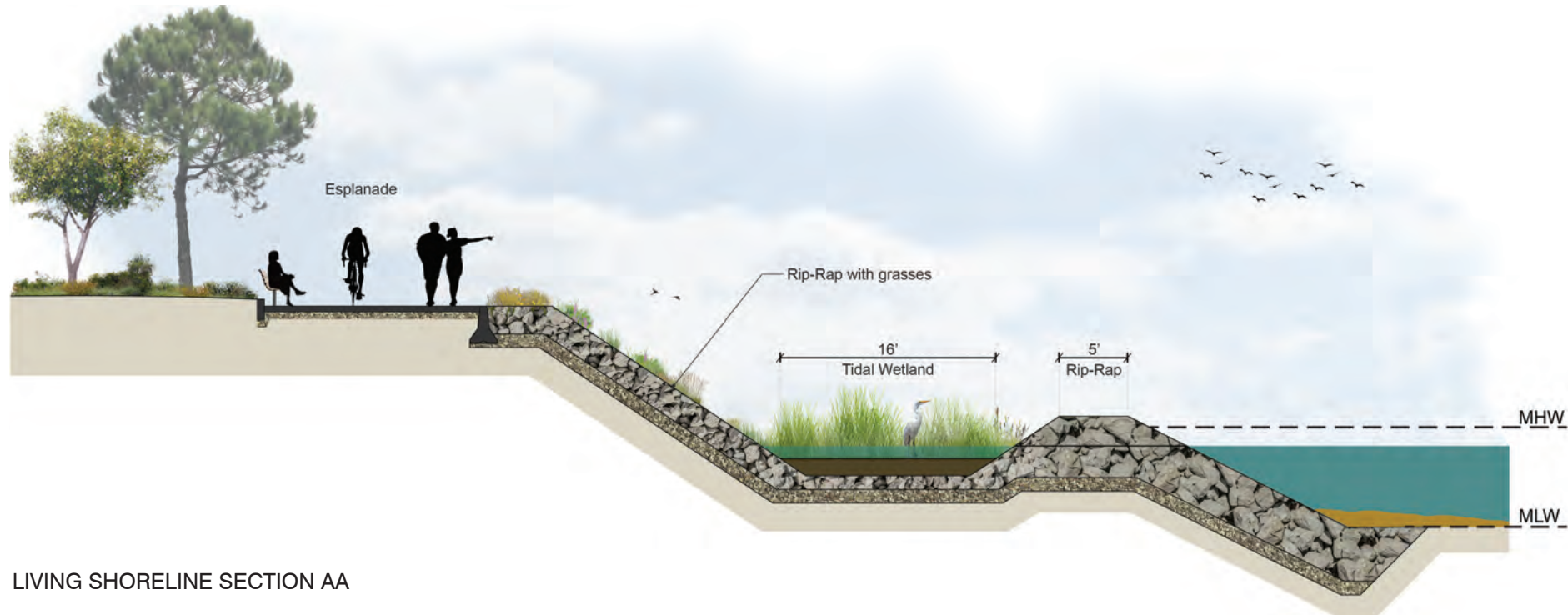
NATURAL PLAYGROUND



BMX PUMP TRACK



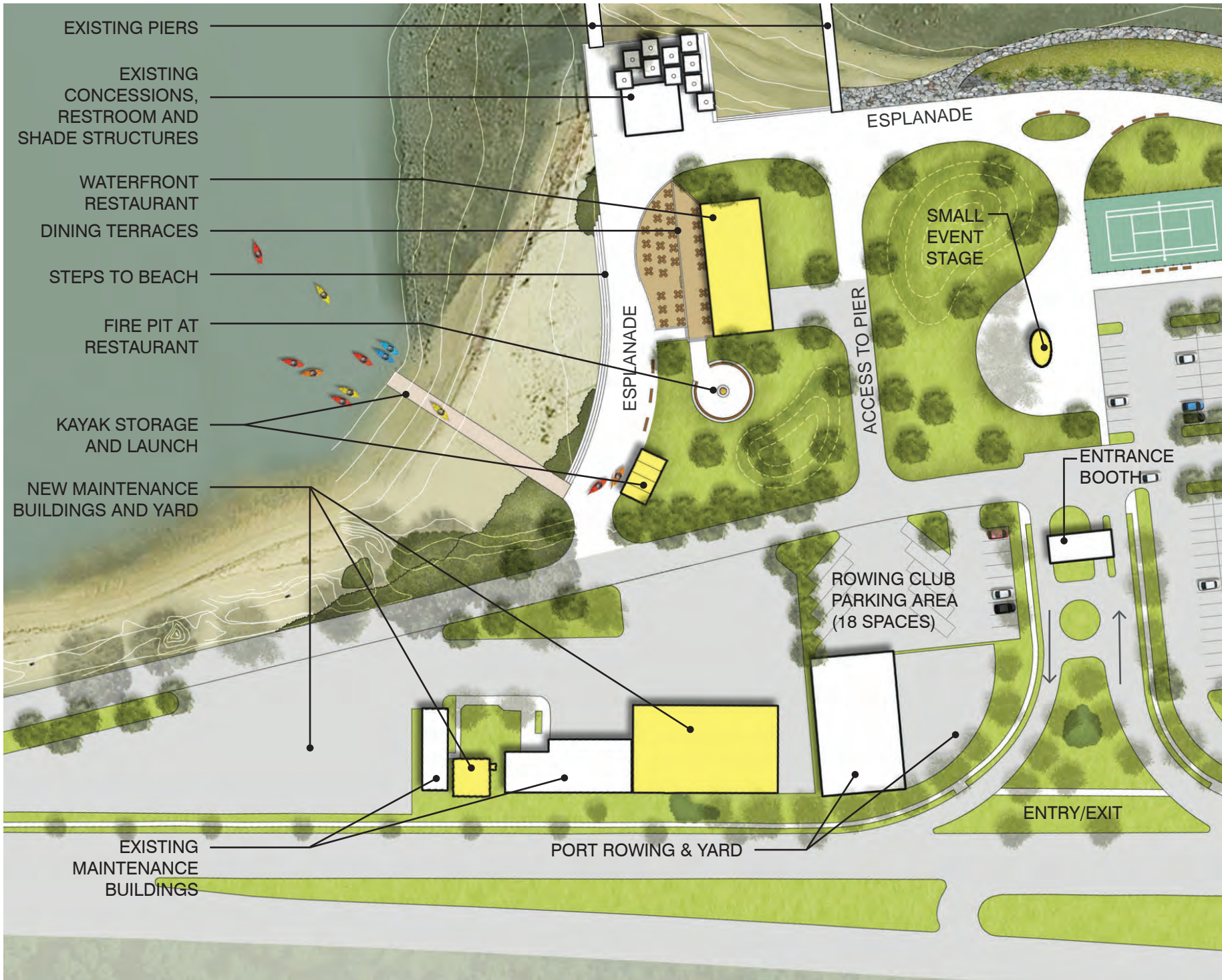
SKATE PARK



LIVING SHORELINE SECTION AA



CLIMBING WALL



WATERFRONT RESTAURANT

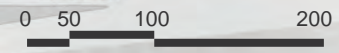
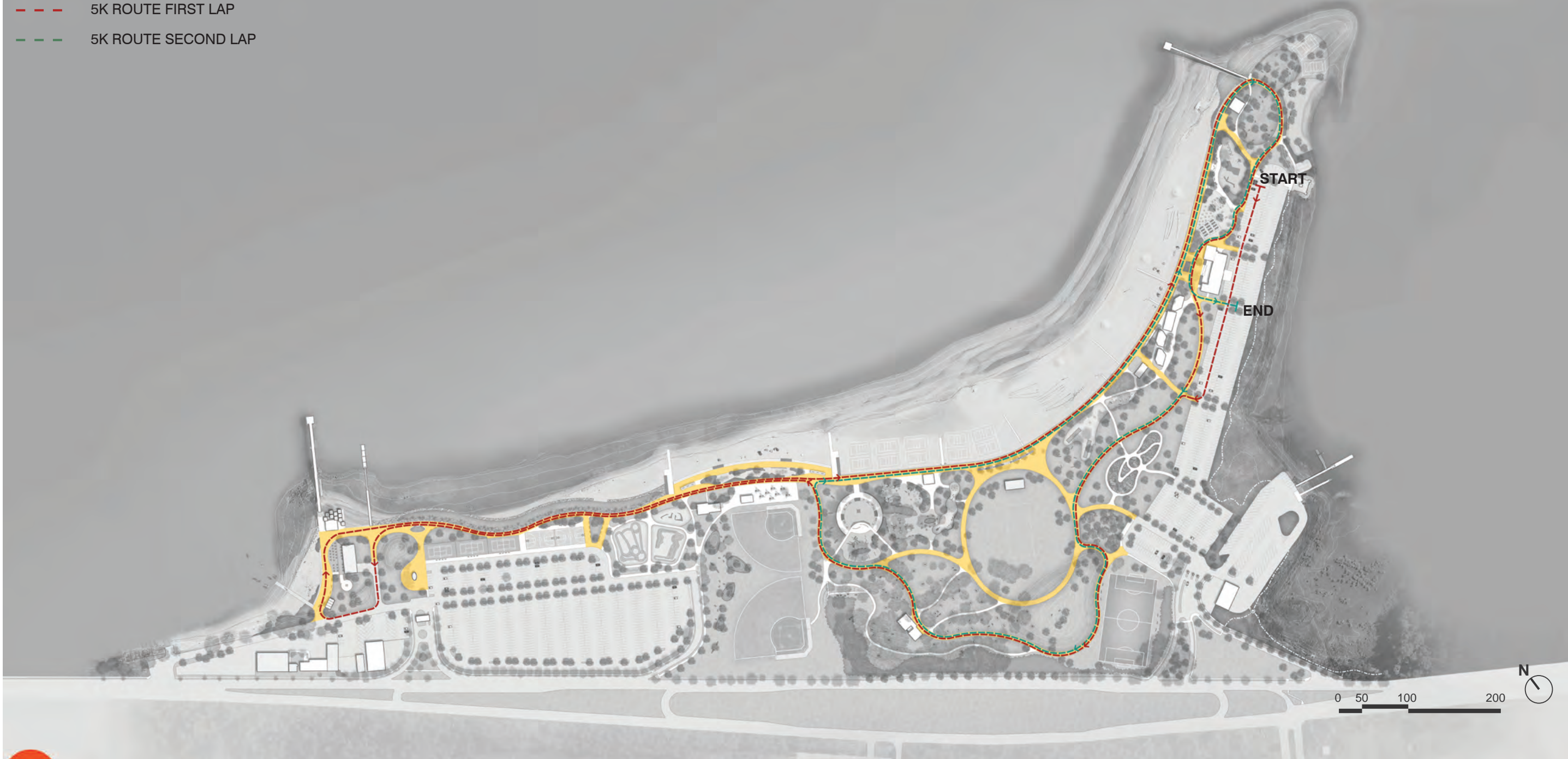


FIRE PIT



KAYAK LAUNCH

- 16' WIDE SHARED PATHWAY
BIKE & PEDESTRIAN
- 5K ROUTE FIRST LAP
- 5K ROUTE SECOND LAP



 **Eliminated Parking**

Eliminated parking area: 8 acres

Eliminated parking spaces: 675

